



Sony Ericsson

# Component Replacement

- electrical -



*Yendo, Yizo*  
*W150, W150i, W150a*



## CONTENTS

1	Replaceable Components .....	3
2	Component Placing.....	6
3	Repair Actions .....	7
3.1	Shield Can Fence Modifications (N/A) .....	7
3.2	Additional Repair Info .....	8
4	Revision History .....	15

*For general information about electrical repair related issues, refer to  
1220-1336: Generic Repair Manual - electrical*



# 1 Replaceable Components

## EXPLANATION OF ABBREVIATIONS USED IN THE COLUMN 'COMMENTS' BELOW

### **COMPONENT LOCATION**

**P** = Primary side

**S** = Secondary side

### **MOISTURE SENSITIVITY LEVEL**

**MSLX** (X = 1, 2, 2A, 3, 4, 5, 5A or 6)

**For more information on moisture sensitivity levels:**

**Refer to 1220-1336: Generic Repair Manual – electrical, section 'Moisture & Baking'!**

### **REPAIR METHOD**

**HA** = Hot Air (removal & mounting)

**ST** = Soldering Tool (removal & mounting)

**HA/ST** = Hot Air for removal - Soldering Tool for mounting

**BGA** = BGA Station

**BH** = Bottom Heater

### **ADDITIONAL INFORMATION**

⇒1 (2,3,4, etc.) = Proceed to 'Additional Repair Info' for further instructions in the indicated section(s).

### **CALIBRATION**

**C** = Calibration of the phone is required after replacing the component

**Calibration to be done by authorized centers only!**



Position	Component	Part no.	Comments
D401	Diode Protection 5, V SOD882	1211-8286	P HA ⇒1
D404	Diode Protection 5, V SOD882	1211-8286	P HA ⇒2
D405	Diode Protection 5, V SOD882	1211-8286	P HA ⇒2
D413	Diode Protection 5, V SOD882	1211-8286	P HA ⇒3
D414	Diode Protection 5, V SOD882	1211-8286	P HA ⇒3
D415	Diode Protection 5, V SOD882	1211-8286	P HA ⇒3
D416	Diode Protection 5, V SOD882	1211-8286	P HA ⇒4
D601	Diode Protection 5, V SOD882	1211-8286	P HA
D602	Diode Protection 5, V SOD882	1211-8286	P HA ⇒6
D605	Diode Protection 5, V SOD882	1211-8286	P HA ⇒5
D606	Diode Protection 5, V SOD882	1211-8286	P HA ⇒5
D607	Diode Protection 5, V SOD882	1211-8286	P HA ⇒5
D608	Diode Protection 5, V SOD882	1211-8286	P HA ⇒5
D612	Diode Protection 5, V SOD882	1211-8286	P HA ⇒5
D613	Diode Protection 5, V SOD882	1211-8286	P HA ⇒5
D705	Diode Protection 5, V SOD882	1211-8286	S HA
D706	Diode Protection 5, V SOD882	1211-8286	S HA
D711	Diode Protection 5, V SOD882	1211-8286	S HA
D403	Diode Protection 24, V SOD-882	1203-9069	P HA ⇒2
D610	Varistor	A/308-0000-00025	S HA ⇒7
D611	Varistor	A/308-0000-00025	S HA ⇒8
D604	Varistor 18V	A/308-0000-00054	P HA ⇒9
D707	LED Amber h=0,4	1000-7561	S MSLX3 HA
D708	LED Amber h=0,4	1000-7561	S MSLX3 HA
D709	LED Amber h=0,4	1000-7561	S MSLX3 HA
D701	LED	1223-3002	S MSLX2 HA/ST⇒10
J401	Battery Connector	1236-1296	P BGA ⇒12
J403	Micro USB Connector	1230-2857	P BGA ⇒13
J404	SIM Card Connector	1234-7421	P BGA ⇒14,20
J406	Micro SD Connector	1220-9816	P BGA
J501	Camera Socket	1220-0574	P BGA ⇒15
J502	Conn BtB	1200-2529	S BGA
J504	Conn FPC 13p ZIFF	1234-7424	P BGA ⇒16
J601	Conn I/O 7p 3.5mm AVP	1228-2974	P HA/ST ⇒17
J602	Speaker Connector	1234-7425	P HA ⇒2
J603	Speaker Connector	1234-7425	P HA ⇒6
J604	Mic 4.0 Electret	1224-0804	S HA
J605	Vibrator	1218-9713	P HA BH ⇒18
J904	RF Connector	A/314-0000-00372	P HA/ST
LED401	LED Red	1000-7571	S MSLX3 HA ⇒7
Q701	Diode	1223-2957	S MSLX2 HA/ST⇒11
Q601	Trans P-ch FET	1001-1527	P HA ⇒20
Q602	Trans N-ch FET SC-75/SOT-416	1200-9266	P HA ⇒20
RN501	Resistor	A/301-1000-00089	P HA ⇒21
RN502	Resistor	A/301-1000-00089	P HA ⇒21
RN503	Resistor	A/301-1000-00089	P HA ⇒21
RN504	Resistor	A/301-1000-00095	S HA ⇒7
RN505	Resistor	A/301-1000-00095	S HA ⇒7
RN506	EMI Filter	A/308-0000-00046	S HA ⇒7
SW720	Side Key Switch	A/315-0000-00047	P HA ⇒22,23
SW721	Side Key Switch	A/315-0000-00047	P HA ⇒22,23
SW722	Side Key Switch	A/315-0000-00047	P HA ⇒23



## Component Replacement (elect)

Position	Component	Part no.	Comments
<b>U502</b>	IC Touch Screen Controller	A/311-0000-00912	S BGA ⇨24
<b>U503</b>	Level Shifter	1218-5719	P HA ⇨19
<b>U504</b>	IC Vreg PLP1010-4	1201-1568	P HA ⇨20
<b>U604</b>	IC Overvoltage Protection	1234-6058	P HA ⇨20
<b>U701</b>	IC 8-pin QFN	1217-4125	P HA ⇨20
<b>U801</b>	IC Bluetooth and FM Transceiver	1230-5044	P BGA ⇨25
<b>U802</b>	Filter Cer Ceramic RF Bandpass 2.441 GHz	1231-9570	P HA ⇨25
	BT Shielding Can	A/415-22580-0009	P BGA ⇨25



## 2 Component Placing

To access the Component Placing document, double-click the icon below.  
Applicable for on-screen viewing only – icon not shown on hard-copies.





## 3 Repair Actions

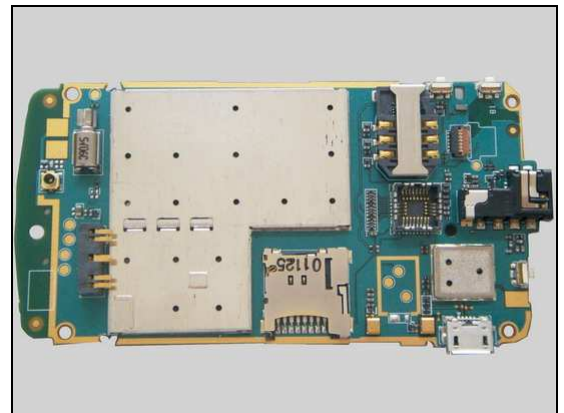
**Refer to the Tools Catalogue/Matrix for information about equipment required for PBA repair!**

### 3.1 Shield Can Fence Modifications (N/A)

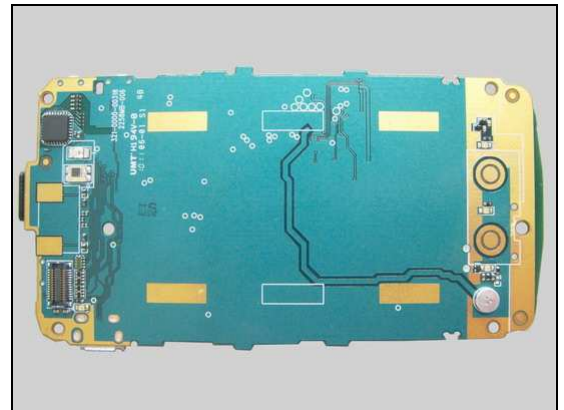
Refer to the pictures below of the primary and secondary sides for repairs that require the Shield Can Fence to be modified:

- the shield can lid has to be removed
- the red symbols show where the frame should be cut to enable rework
- after rework the height of the frame should not be affected
- it should not be visible that rework has been carried out when the lid has been mounted

*Primary side*



*Secondary side*





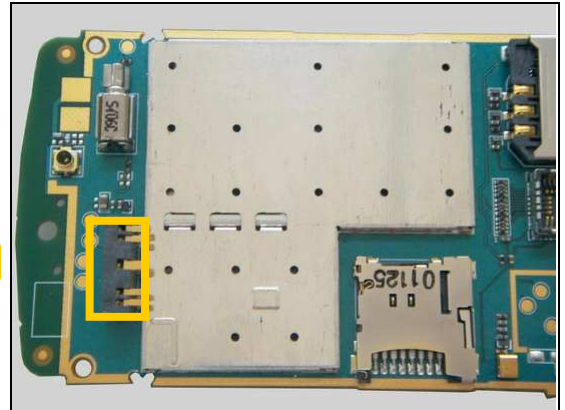
## Repair Actions

### 3.2 Additional Repair Info

1

D401

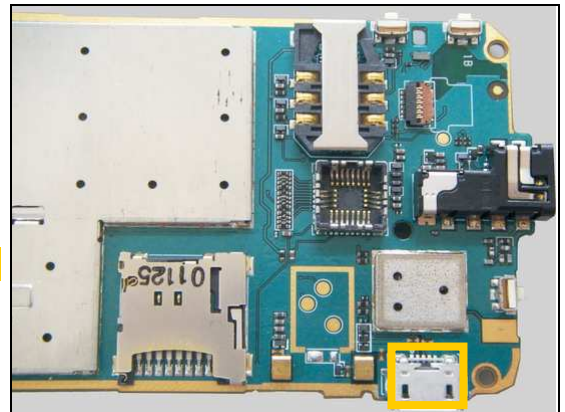
**Protect the Battery Connector with capton tape!**



2

D403, D404, D405, J602

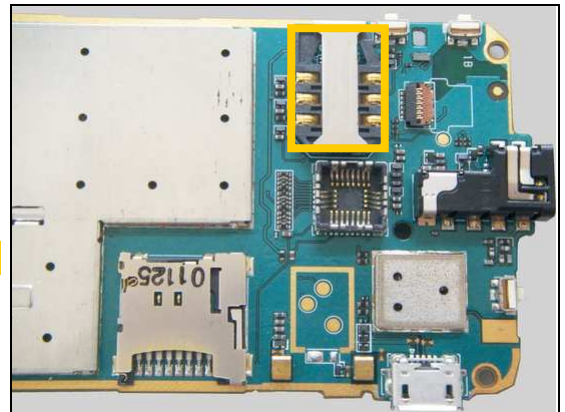
**Protect the Micro USB Connector with capton tape!**



3

D413, D414, D415

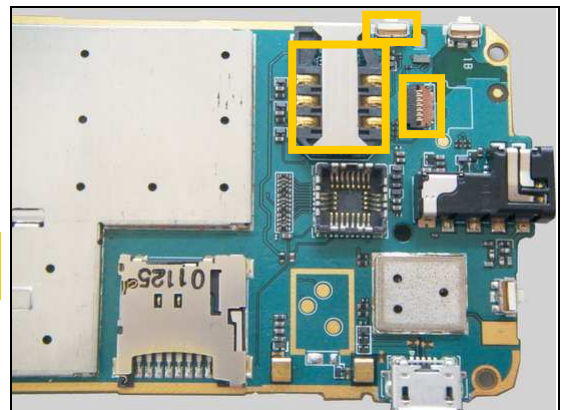
**Protect the SIM Card Connector with capton tape!**



4

D416

**Protect the SIM Card Connector, Side Key Switch and Touch Panel FPC Connector with capton tape!**





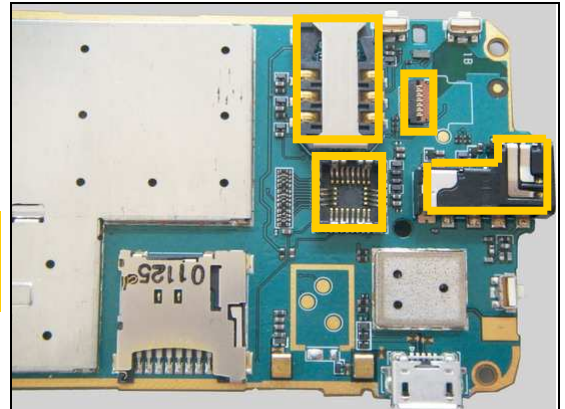


## Repair Actions

5

D605, D606, D607, D608, D612, D613

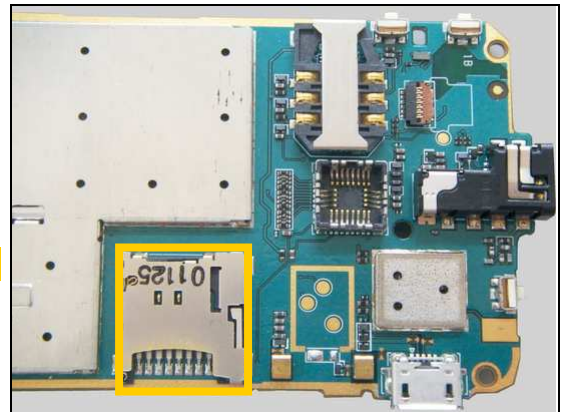
**Protect the Audio Jack, Camera Socket, Touch Panel FPC Connector and SIM Card Connector with capton tape!**



6

D602, J603

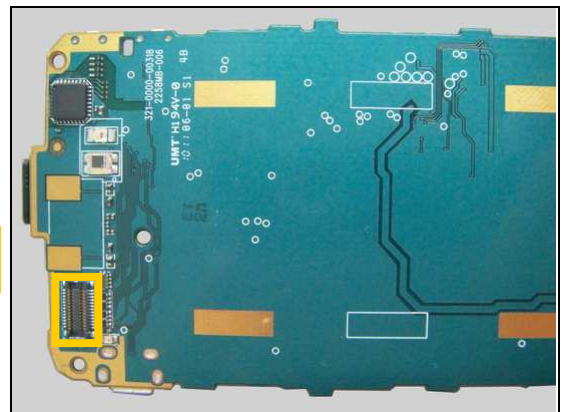
**Protect the Micro SD Connector with capton tape!**



7

D610, LED401, RN504, RN505, RN506

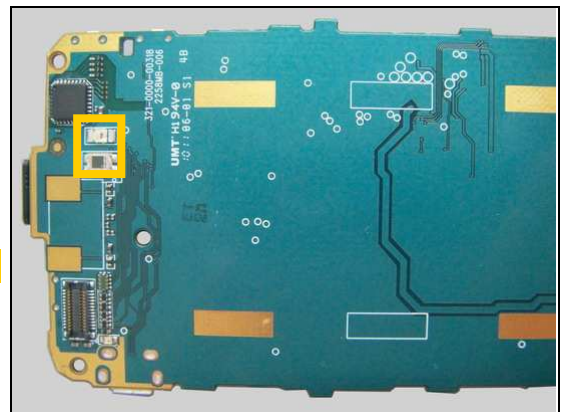
**Protect the Main Display BtB connector with capton tape!**



8

D611

**Protect the D701 and Q701 with capton tape!**



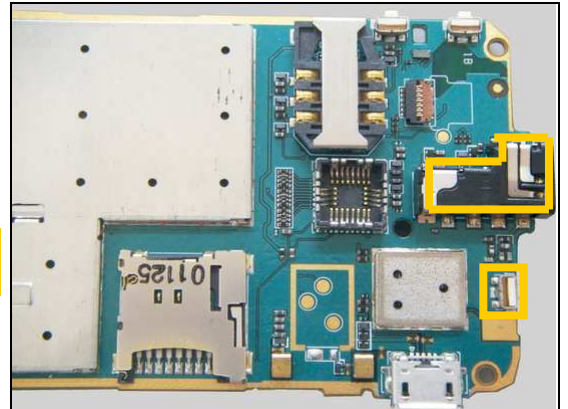


## Repair Actions

9

D604

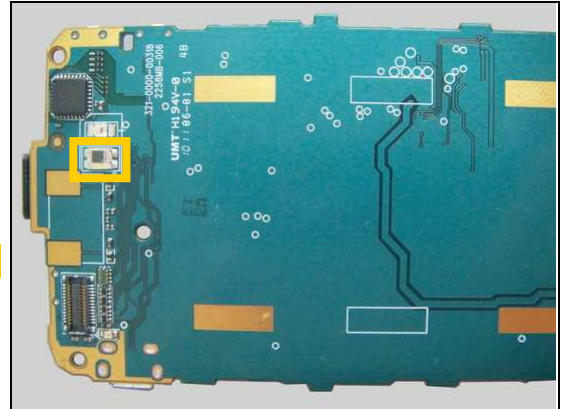
**Protect the Audio Jack and Side Key Switch with capton tape!**



10

D701

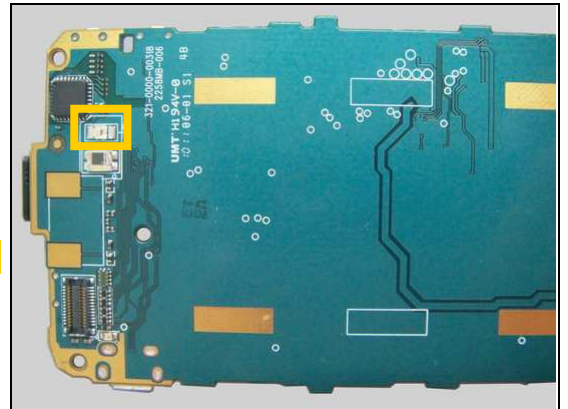
**Protect Q701 with capton tape!**



11

Q701

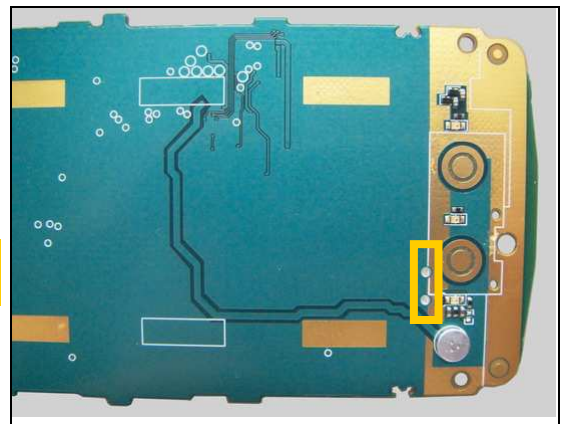
**Protect D701 with capton tape!**



12

J401

**Add solder in the holes with Soldering Iron after mounting!**



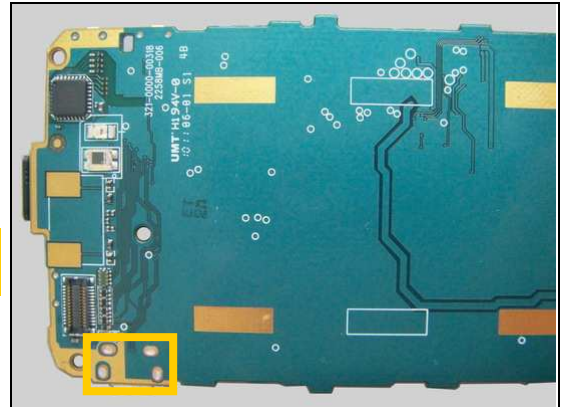


## Repair Actions

13

J403

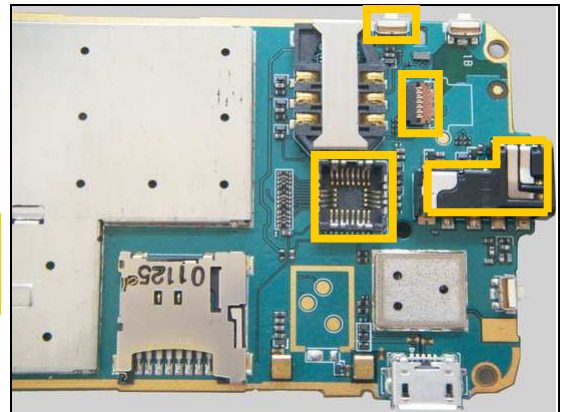
**Add solder in the holes with Soldering Iron after mounting!**



14

J404

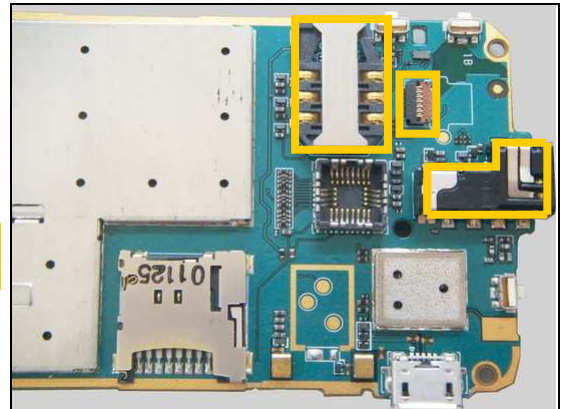
**Protect the Audio Jack, Camera Socket, Side Key Switch and Touch Panel FPC Connector with capton tape!**



15

J501

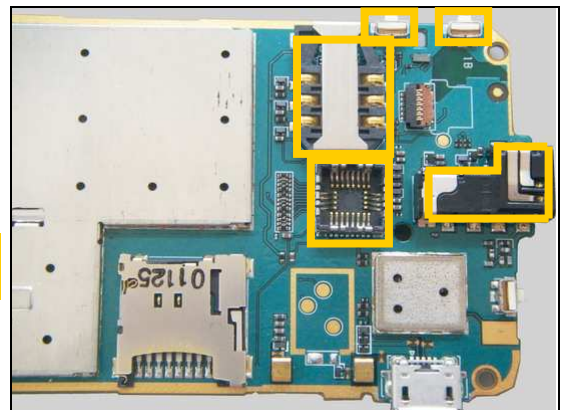
**Protect the SIM Card Connector, Audio Jack and Touch Panel FPC Connector with capton tape!**



16

J504

**Protect the SIM Card Connector, Camera Socket, Audio Jack and Side Key Switches with capton tape!**





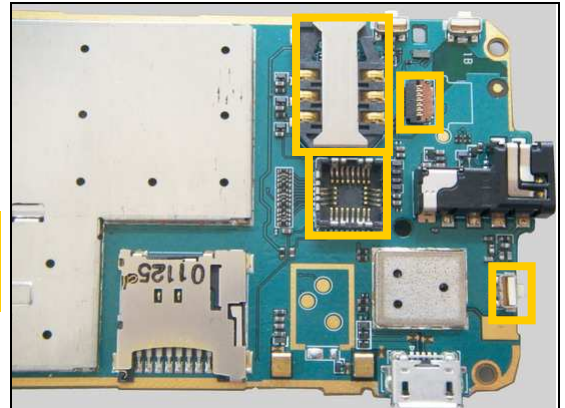


## Repair Actions: Additional Repair Info

17

J601

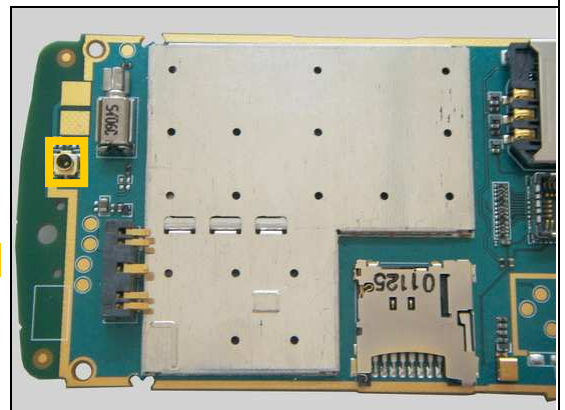
**Protect the SIM Card Connector, Camera Socket, Touch Panel FPC Connector and Side Key Switch with capton tape!**



18

J605

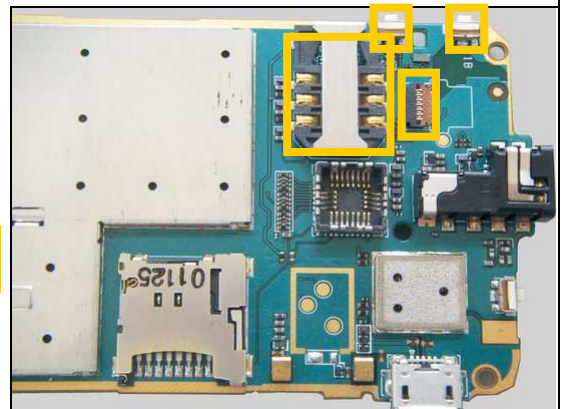
**Protect the RF Connector with capton tape!**



19

U503

**Protect the Touch Panel FPC Connector, SIM Card Connector and Side Key Switches with capton tape!**

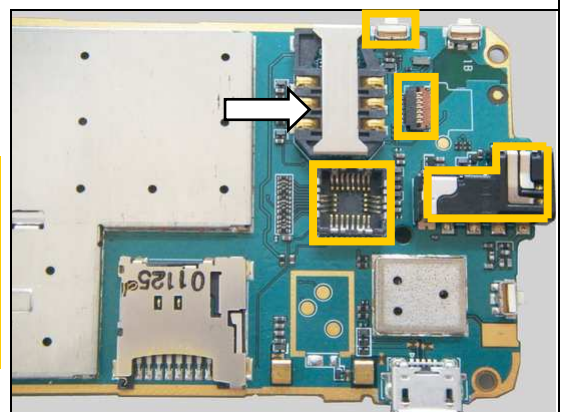


20

Q601, Q602, U604, U504, U701

**Remove the SIM Card Connector first before replace these five parts and re-solder a new SIM Card Connector after replacement!**

**Protect the Audio Jack, Camera Socket, Side Key Switch and Touch Panel FPC Connector with capton tape!**



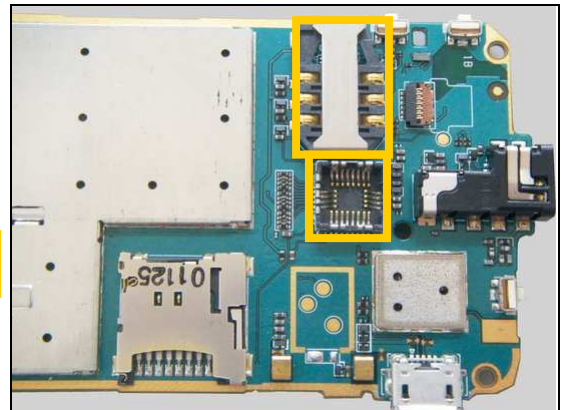


## Repair Actions: Additional Repair Info

21

RN501, RN502, RN503

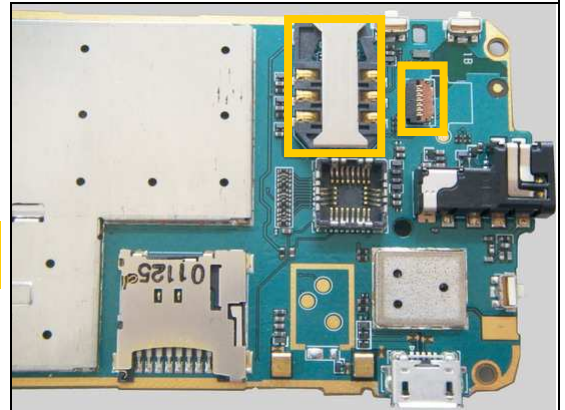
**Protect the SIM Card Connector and Camera Socket with capton tape!**



22

SW720, SW721

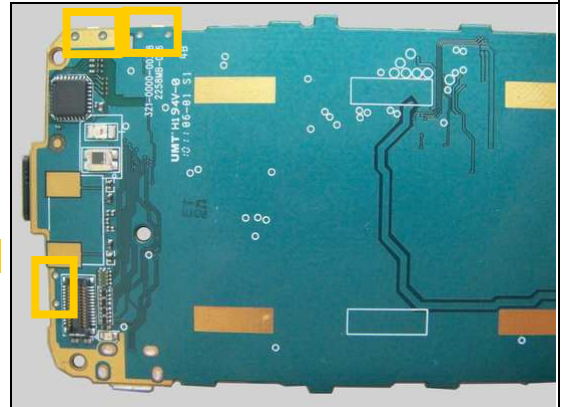
**Protect the SIM Card Connector and Touch Panel FPC Connector with capton tape!**



23

SW720, SW721, SW722

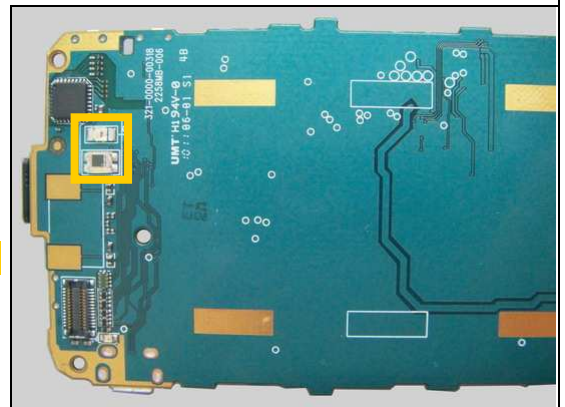
**Protect the RF Connector with capton tape!**



24

U502

**Protect the Q701 and D701 with capton tape!**





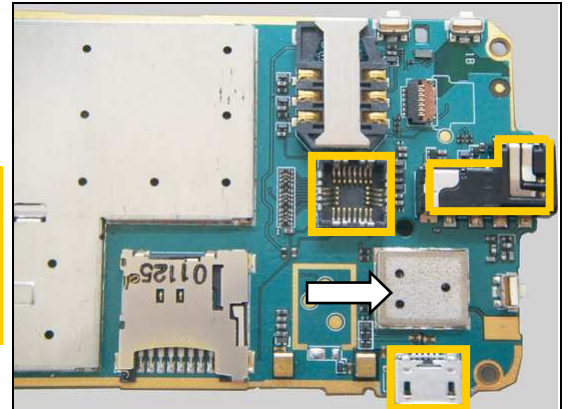
## Repair Actions: Additional Repair Info

**25**

**U801, U802**

***Remove the BT Shielding Can first before replace these two parts and re-solder a new BT Shielding Can after replacement!***

***Protect the Audio Jack, Micro USB Connector and Camera Socket with capton tape!***





## 4 Revision History

Rev.	Date	Changes / Comments
1	2010-Nov-08	Initial release
2	2011-May-20	Update 1230-5044 description.